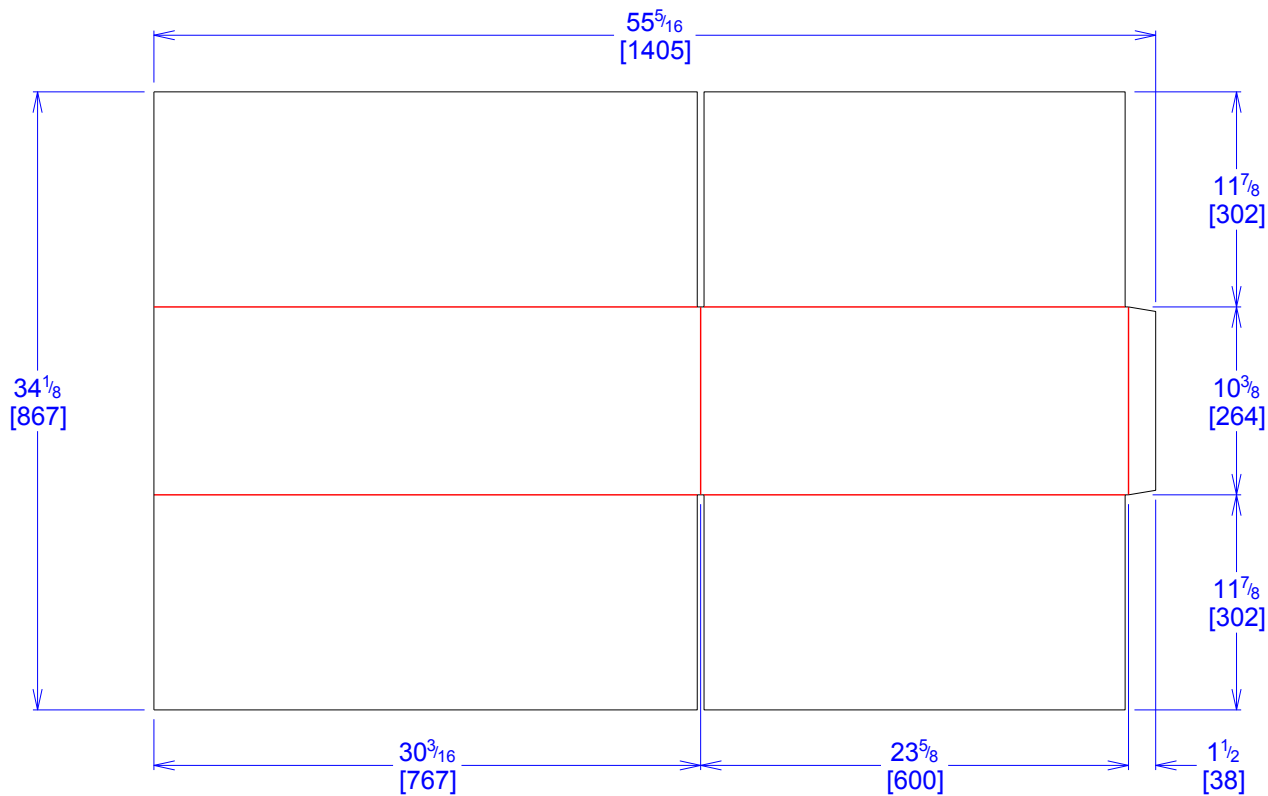


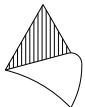
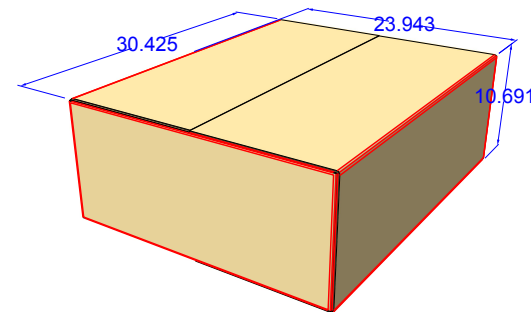


National Account Package Engineering
engsupport@victorypackaging.com
www.victorypackaging.com

CUSTOMER:	Inteva	ID:	30 x 23+1/2 x 10	ENGINEER:	Alejandro Diaz	DESIGN #:	D12818477	0
ITEM:	16931573-rev 1	BLANK SIZE:	34+1/8 x 55+5/16	SALES REP:	Antonio Garcia	DR #:		
CUST PROD. #:		SQ FT:	13.11	JOINT:	Glued In	PRINT DATE:	12/16/2014	
STYLE:	RSC	WASTE (%):	2.61	CORR DIRECTION:	Vertical	VIEW:	outside	
MATERIAL:	32 ECT C Kraft	RULE TOTAL IN:	353	KIT:	INTEVA-M144-00964-16931573			
MATERIAL NOTES:				GENERAL NOTES:	LA CAJA SE FORMA CON 2 PARTES IGUALES			



EXTERNAL DIMENSION



Vertical Corrugation

Print Status:	ID and Cert
Colors:	

General Tolerances unless otherwise noted:					
Die Cut Corrugated Flat:	+/- 1/16	Pad/Block location:	+/- 1/8	Wood Block:	+/- 1/4
Die Cut Corrugated Rotary:	+/- 3/16	Pad/Sheet:	+/- 1/8	Foam Block:	+/- 3/16

Specification Release
Approved for Production:

YES